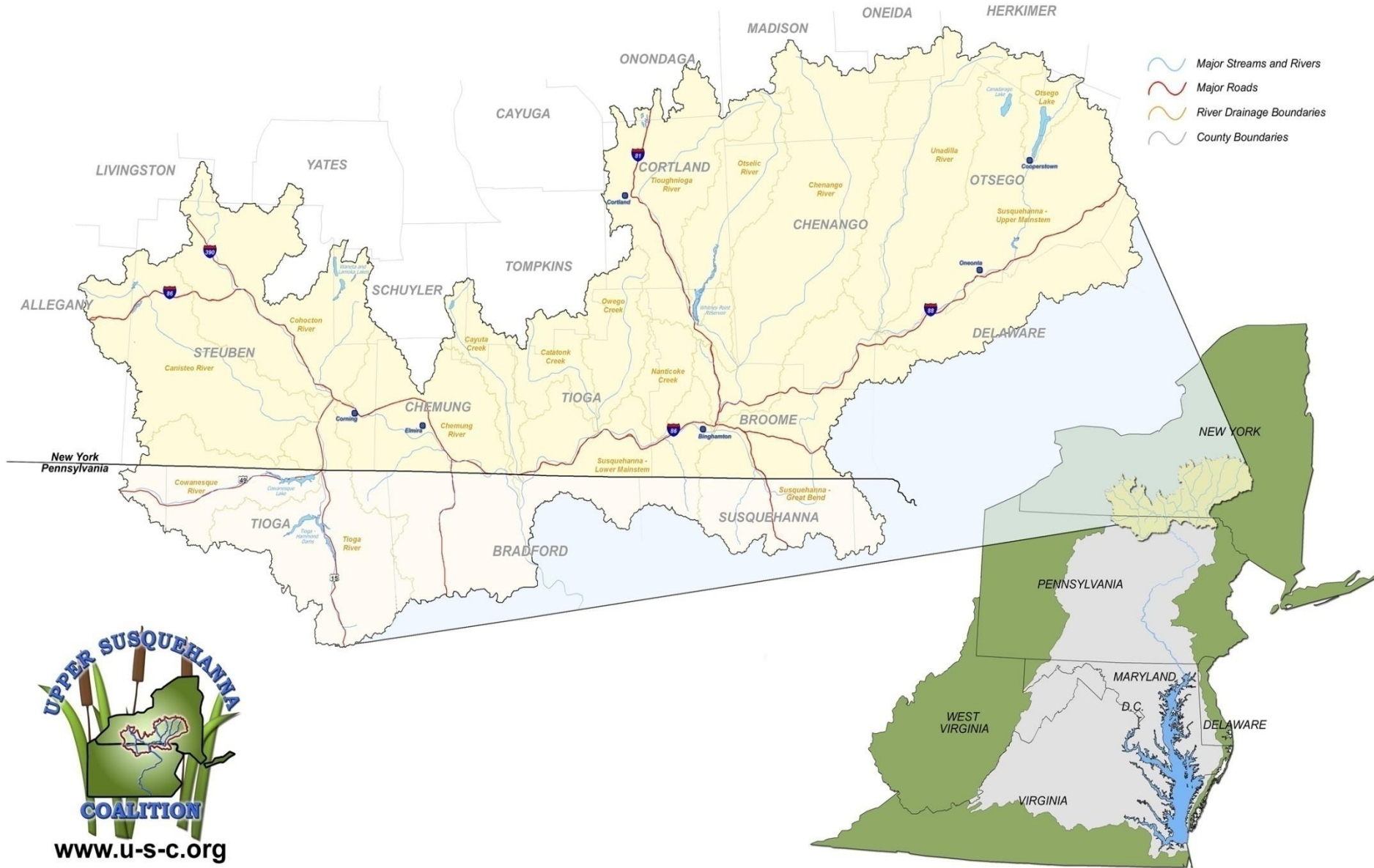


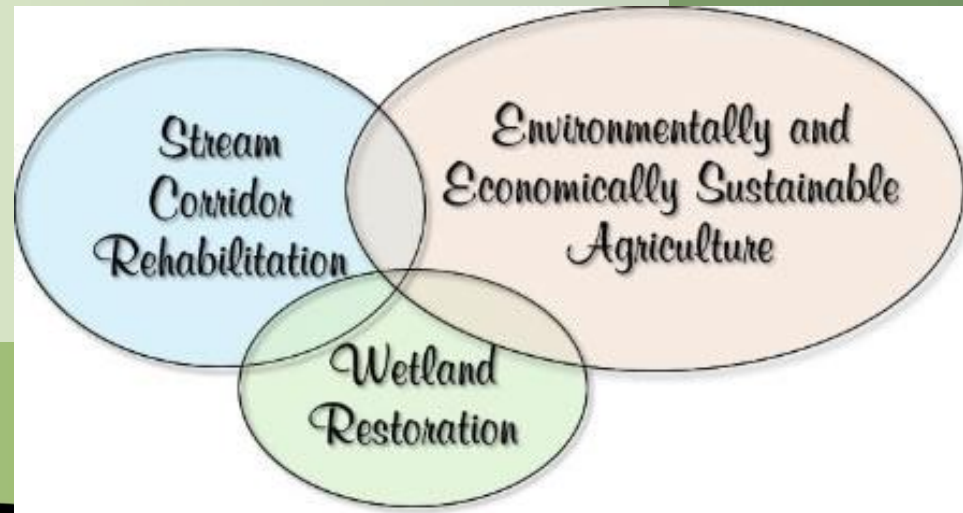
# THE UPPER SUSQUEHANNA COALITION

## HEADWATERS OF THE CHESAPEAKE BAY



# How the USC works

- Regional Delivery Mechanism for targeted watershed restoration
- Focus on implementation of soft practices
- Look for opportunities to fund local needs
  - Example: road ditch practices, flooding, hellbender habitat restoration
- Fill gaps (technically and financially) with existing programs, build capacity for new programs within SWCDs.
- Composed of teams:
  - Agriculture
  - Stream
  - Wetland
  - Buffer
  - Construction
  - Outreach





# We Support

- USC Water Quality Program Projects
- Cover Crops
- DEC's Trees for Tributaries
- Watershed Assessments, Stream Restoration
- Emergency Stream Intervention
- NRCS RCPP
- Berm Removal
- Buffer Steward Program
- Buffer Planning Program
- Wetland Restoration





# Implementation Program: USC Water Quality Program

- Program goals:

- Increase implementation of riparian forest buffers, wetlands, stream corridor rehabilitation
- Provide funding for associated water quality BMPs on Ag land:
  - Fence
  - Off stream water
  - Crossings
  - Erosion Control Practices

- Funders: NFWF, DEC/Ag and Markets, Arbor Day Foundation, USFS
- Matching programs:
  - Climate Resilient Farming
  - Ag Non-Point Source Abatement Program
  - CREP
- All projects facilitated through SWCDs and partners





# USC Water Quality Program

- Districts fill out application, request for funding. \*District led projects\*
- Application review and site visits.
- District is awarded funding.
  - Quick turnaround with award and contract
- Invoice and report upon project completion.

## Application review: RANKING

- Stream Corridor Assessment Protocol- AEM Tier 3A checklist
- Special habitat points- trout, hellbender, eels, black duck, etc.
- Points for cost effectiveness or practices- N, P, Seds.

<http://www.uppersusquehanna.org/usc-teams/stream-team/stream-corridor-assessment-guide/>

