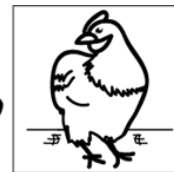
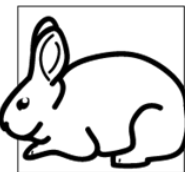
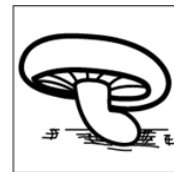




Assisting Bottomland Farm's Environmental Stewardship and Land Management Goals through the AEM Program

Danielle Singer – Tioga County SWCD

Rebecca Rimmel – Owner & Operator of Bottomland Farm



Bottomland Farm

Agricultural Environmental Management Program (AEM)



AEM is a voluntary, confidential, and locally-led approach to advancing environmental stewardship on all farms in our state.

The fundamental principles of the program are to ensure New York's farms remain viable and continue to meet their business objectives while improving their impact on natural resources and water quality through technical support and financial incentives.

5 Tier Approach

- (1) Gauge interests
- (2) Assess existing conditions & opportunities
- (3) Develop farm-specific conservation plans
- (4) Implement BMPs
- (5) Update plans and BMPs over time



Wetlands



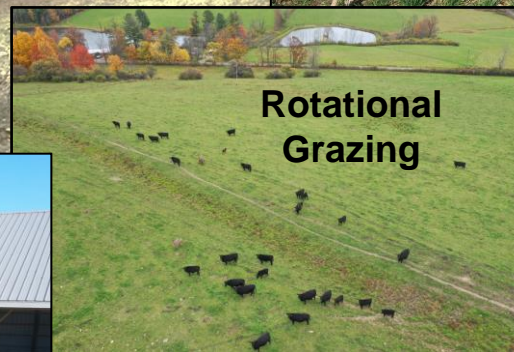
Manure Storage



Cover Crops, Reduced Tillage & Soil Health



Streambank Stabilization



Rotational Grazing



Riparian Forest Buffers



Streambank Stabilization



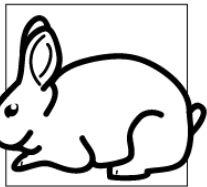
Manure & Milkhouse Waste Management



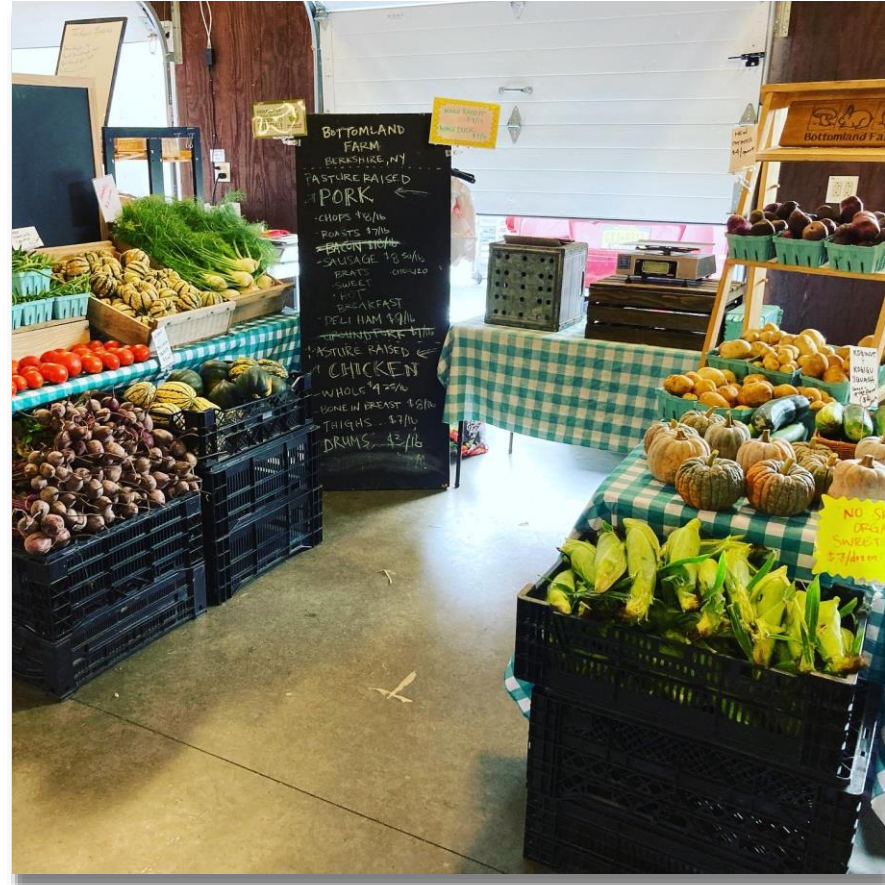
Livestock Watering System



Access Road, Laneways & Stabilized Waterways



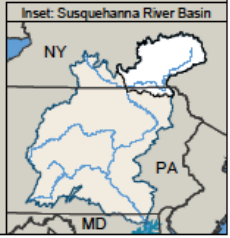
Bottomland Farm

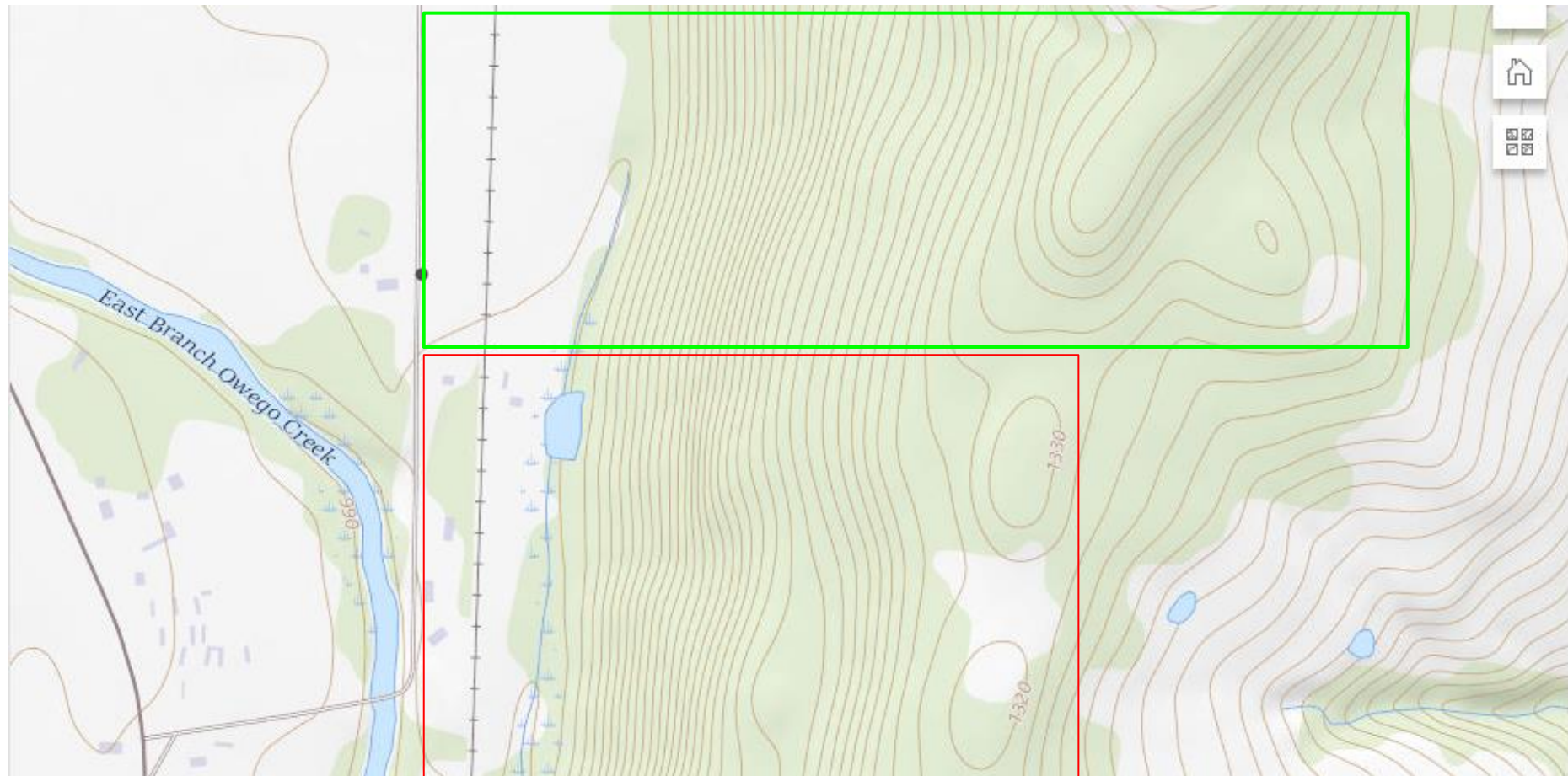






DISCLAIMER: Use of Map for Any Purpose on "As Is" Basis. No Warranties Provided. SRBC (13306) 01-25202-1

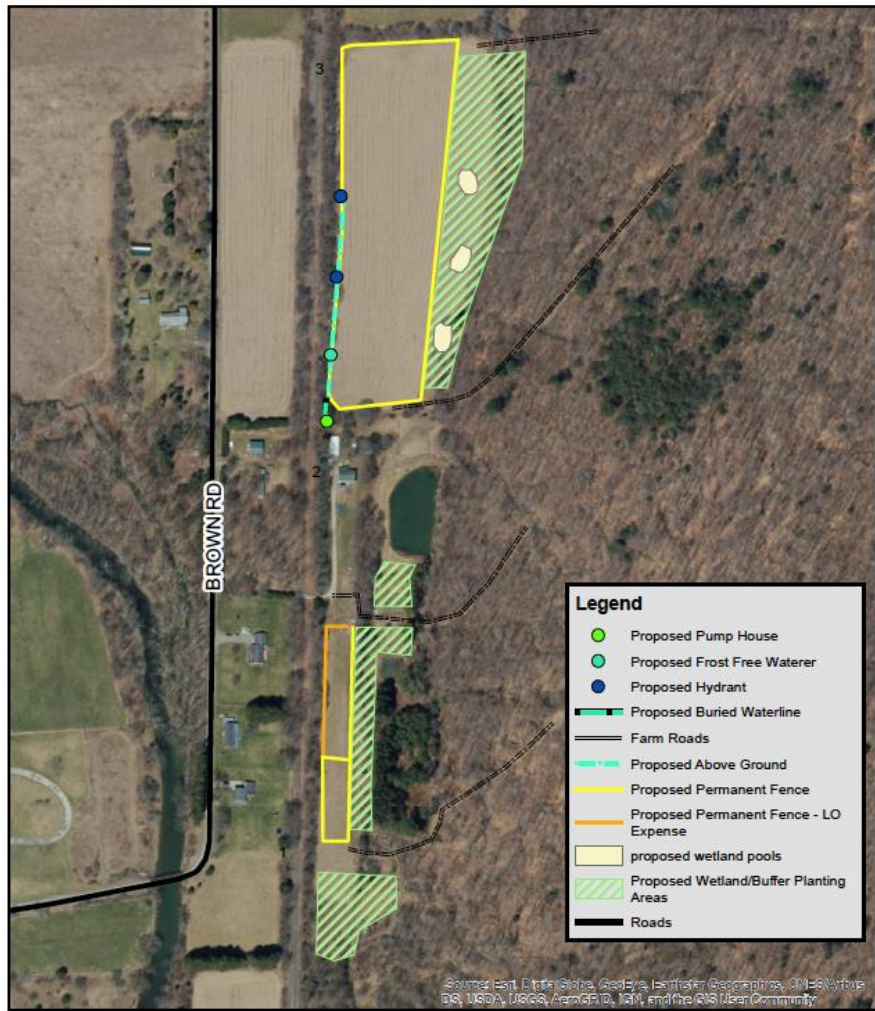




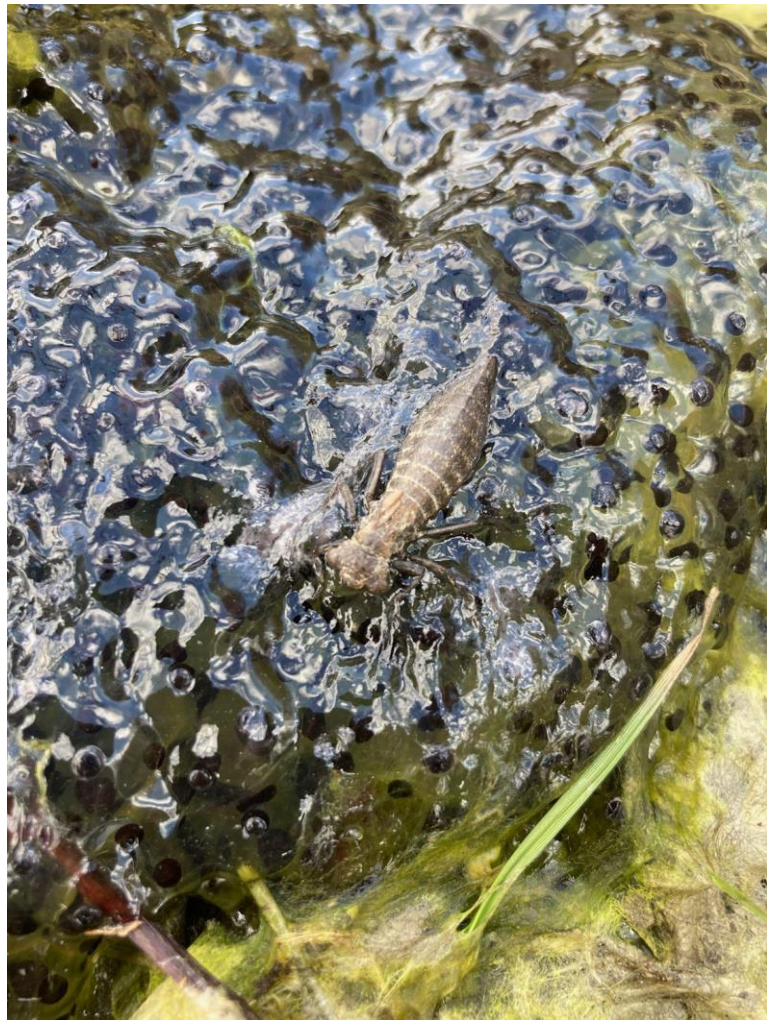
Step 1: AEM Tier 1 & 2

(inventory and document activities, interests, and potential environmental concerns)

- **Watershed Site Evaluation**
- Agriculture & Community
- Manure & Fertilizer Management
- Manure & Fertilizer Storage
- **Heavy Use Areas (HUA)**
- Silage Storage
- Process Wash Water
- Management of Feed Nutrients
- **Water-Borne Pathogens**
- Soil Management
- **Pasture Management**
- Waste Disposal
- Pesticide Use
- Pesticide Storage, Mixing & Loading
- **Farmstead Water Supply Evaluation**
- **Stream & Floodplain Management**
- Petroleum Products Storage
- Forest Management
- Livestock Odor Management
- Irrigation Water Management
- **Greenhouse Gas Mitigation Opportunities**

















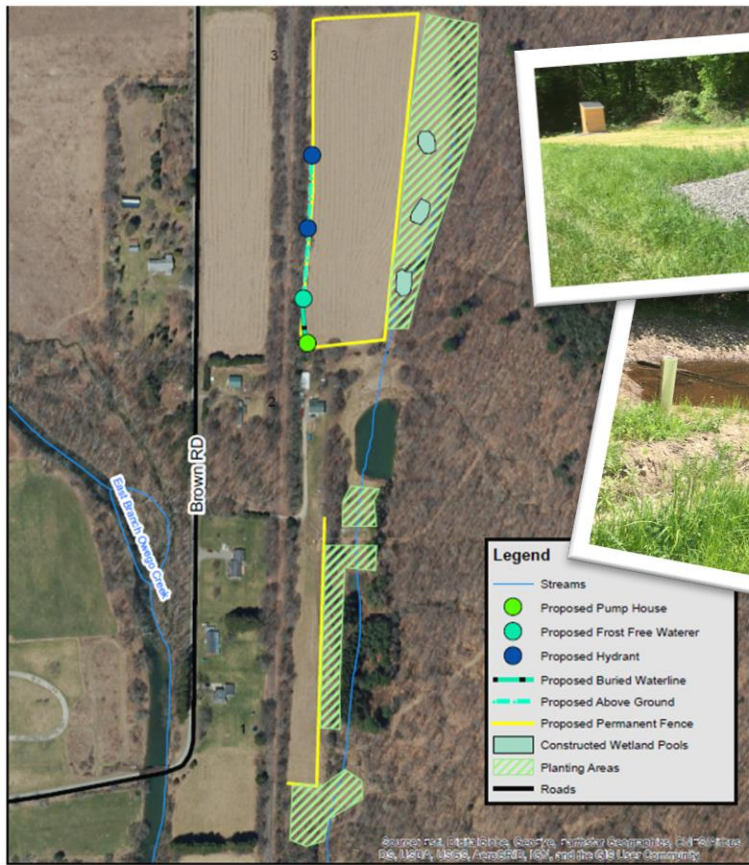
Overall Results:

- Created more efficiency on our farm
- More peace of mind (anyone with livestock & no perimeter fencing should understand!)
- Increased biodiversity
- Improved soil health
- Reduced erosion
- Improved water quality
- Increased carbon sequestration



How the Bottomland Farm Project fits into the AEM Program

- Initial interest from farm for grazing
- Walking the land, hearing the farm's goals
- SWCD created a conservation plan with farm input
 - Match a funding program to the project
 - Planting establishment period : 5-7 years
 - Relationship continues and follow-up

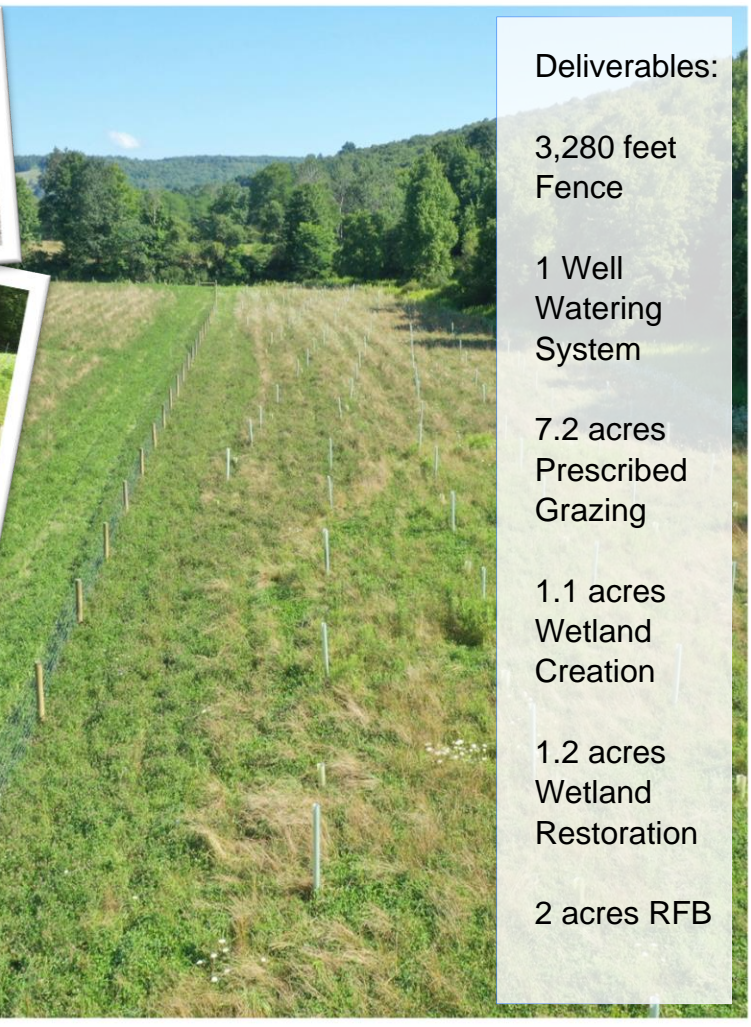


Proposed Practices
 Bottomland Farm
 Rebecca Rimmel
 Town of Newark Valley
 Tioga County, NY

D. Singer
 Tioga County SWCD
 December 2020

Tioga County SWCD makes no representation or warranty as to the accuracy or reliability of any information, resources or data provided, produced, compiled or otherwise utilized by any person, corporation or entity for any purpose whatsoever. The user or any third party may not rely upon the accuracy or reliability of such information, resources or data. Any user or third party assumes all risks and liability in the utilization of any information, resources or data. Photo: 2015

**This map is for planning purposes only*



Deliverables:

3,280 feet
Fence

1 Well
Watering
System

7.2 acres
Prescribed
Grazing

1.1 acres
Wetland
Creation

1.2 acres
Wetland
Restoration

2 acres RFB



Thank you!

Danielle Singer – Tioga SWCD
singerd@tiogacountyny.gov

Rebecca Rimmel – Bottomland Farm
farmer@bottomlandfarm.com