

# Riparian Restoration Opportunities

2/1/2023

USC Retreat

# Trees for Tributaries

---

- Spring- plant and materials request due by 4/7/2023
  - Applications, map and photos due 6/7/2023
- Fall- another 5,000 containerized plants will be ordered, get your projects lined up!



# Spring 2023- 2024 Plant List

Fall will differ slightly based on what is ideal to plant then



Red Maple	Acer rubrum	Tulip Tree	Liriodendron tulipifera
Silver Maple	Acer saccharinum	Black gum	Nyssa Sylvatica
Sugar Maple	Acer saccharum	NineBark	Physocarpus opulifolius
Black Chokeberry	Aronia melanocarpa	American Sycamore	Platanus occidentalis
River Birtch	Betula nigra	Cottonwood	Populus deltoides
Hackberry	Celtis occidentalis	Black Cherry	Prunus serotina
ButtonBush	Cephalanthus occidentalis	Swamp White Oak	Quercus bicolor
Redbud	Cercis Canadensis	Pin Oak	Quercus palustris
Siky Dogwood	Cornus amomum	Black Willow	Salix nigra
Red Osier Dogwood	Cornus sericea	Elderberry	Sambucus canadensis
American Hazelnut	Corylus americana	Northern Red Oak	Quercus rubra
Common Persimmon	Diospyros virginiana	Arrowwood	Viburnum dentatum
Witch hazel	Hamamelis Virginiana	Nannyberry	Viburnum lentago
Spicebush	Lindera benzoin		



## Arbor Day Foundation®

- **2023-** \$300,000.00 for planting 30,000 trees and shrubs
  - Landscape wide
  - District Reimbursement Strategy-
    - \$2.00/ bare root, \$5/tubling or Anderson band
    - Larger stock for urban and direct streamside plantings
- **Currently-** planting over 24,000 plants this spring for approx. \$150K, leaving \$150K for larger stock (still need 6,000 plants though 😊).



# Large Stock Opportunity

- We can order but need species selection from YOU!
  - Fall planting larger stock order:
    - DUE June 9, 2023
    - Species list:
- Urban areas
- Getting shade on the stream quickly



# Buffer Steward Program

---

- New steward coordinator starting 2/6!
- 8 counties applied for 2023 stewardship funds
- Funding secured for 2024



# Implementation Program: USC Water Quality Program

- Program goals:

- **Implement riparian forest buffers, wetlands, stream corridor rehabilitation, grazing, and afforestation.**
- Provide funding for associated water quality BMPs on ag land:
  - Fence
  - Off stream water
  - Crossings
  - Erosion Control Practices

- Funders: NFWF, DEC/Ag and Markets, Arbor Day Foundation, USFS
- Matching programs:
  - Climate Resilient Farming
  - Ag Non-Point Source Abatement Program
  - CREP/EQIP
- Can be used on Ag and Non-ag land!!!



# How to USE the USC Water Quality Program

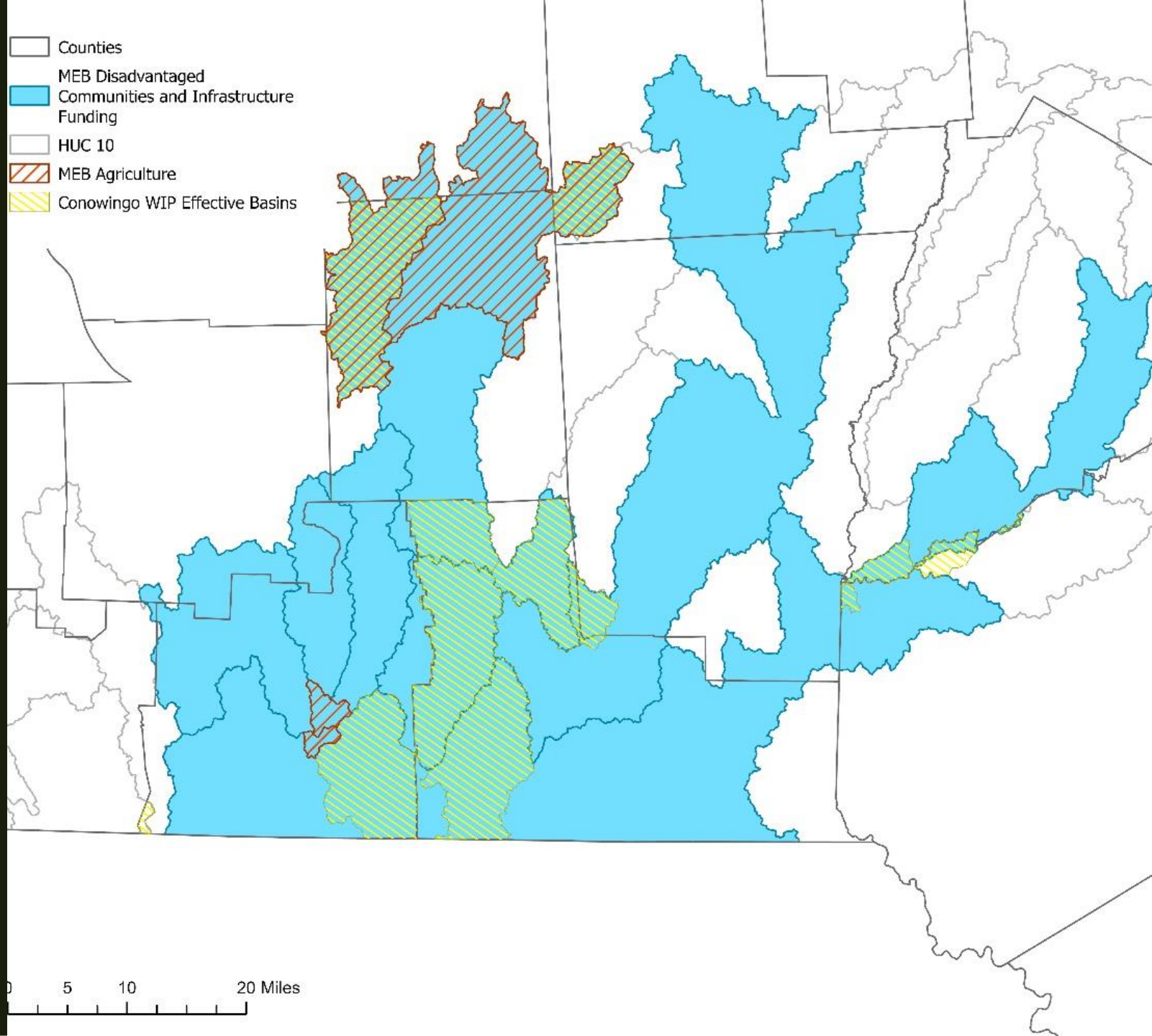
- Districts fill out application, request for funding. \*District led projects\*
- Application review and site visits by review committee.
- District is awarded funding.
  - Quick turnaround with award and contract
- Invoice and report upon project completion.
- Can resubmit projects





# USC WQ Program priority areas

- Funding is NOT limited to these areas.
- Our deliverables are for:
  - Afforestation
  - Riparian buffers
  - Wetland construction
  - Grazing
  - Stream corridor restoration





## Planning funding, all programs

---

- NRCS CREP Contribution agreement- 25% match required
- State buffer program
  - No match required
  - Paid per project size
  - All other programs (Not CRP)
  - 25 plan deliverable



# Planning Funding Reimbursement Levels and Requirements (NON CRP)

Project Planning Funding Amount				
Project size (description)	Small	Medium	Large	X-Large
Project size (acres)	0.5-3 acres	3-5 acres	5-10 acres	10.1-15 acres
Reimbursable amount (\$)	\$ 1,060.00	\$ 2,120.00	\$ 3,180.00	\$ 4,240.00
Hour estimate	20	40	60	80

\$53/hour senior tech rate.

## Planning Components:

- USC Riparian Restoration Plan
- Contractor Estimate Request, if applicable
- Trees for Tributaries Application, if applicable
- Invoice

# Training and Engagement

- Pennsylvania Buffer Summer
- NRCS Plant Materials Center May 3 and 4
- Water Quality Symposium forestry track
- Steward Work Days

