



Buffer Breakout Topics

1/30/2020



Comprehensive Program



Outreach



Implementation through various program

Supporting infrastructure
Transactional costs



Stewardship



Other: CREP state incentives, CREP planning.



Potential Gaps



INCENTIVES

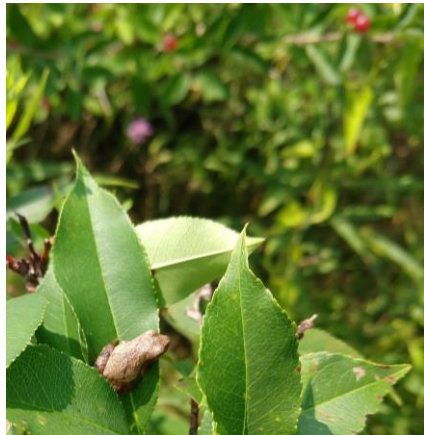


STAFF



Incentives

- What incentives are needed?
 - Do we need to incentivize buffer implementation even with infrastructure funding?
 - Compare to the State Practice Incentive Payment: 20X SRR (\$800-\$1000, 1 time payment per acre).
 - How to advertise the incentives- do you OWN them?



Staff

- Currently more or less like the “Ag Team”
 - Built into district capacity
- Two USC staff
- Can we do more with more staff?
 - USC or district?
- Where is the workload?
- How does it look if more staff are hired?
- What assurances do districts need to hire?

Partnering

- Partners?
- How are we partnering?
 - Outreach?
 - Implementation?
 - Projects?
- How can we mesh missions?
- Doesn't take money?
- What are the obstacles?
- Who is not at the table?
- Of those at the table, what do we need to do together?





Training

Stroud @
Cortland!
June 17 and 18.

What do we
want to learn?